

GIANT WATER COOLER JUG IN 100% rPET



ICE RIVER
IS GREENER
THAN EVER
WITH ITS
GIANT WATER
COOLER JUG
IN 100% rPET



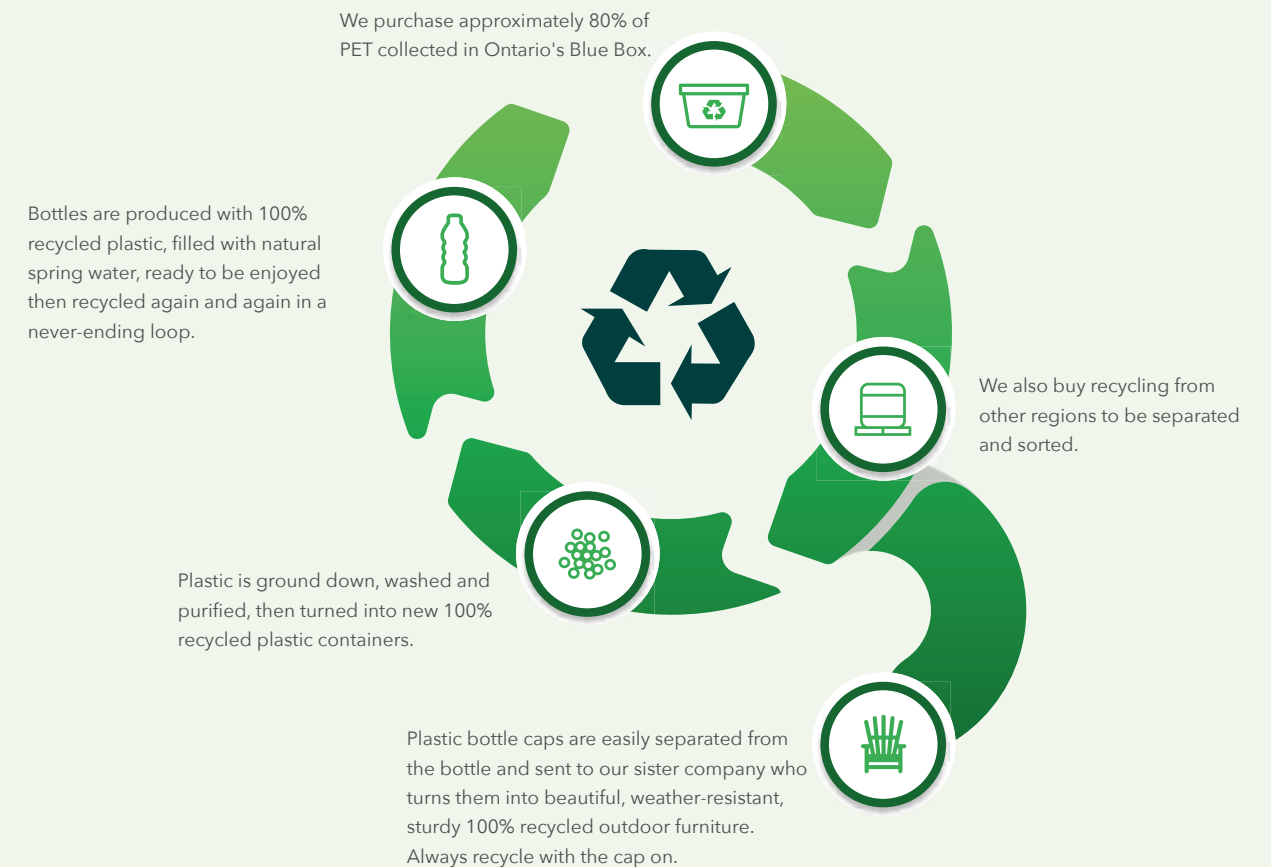
Ice River had recently bought an XFORM preform injection molding system to process 100% post-consumer PET recycle into preforms for its 500-mL spring water bottles.

Ice River was the first beverage company in North America to purchase “blue box” materials to produce its 100% rPET bottles, which is produced in various sizes up to 15 L (4 US gal).

In the meantime, Ice River decided to improve the design of their 15-L (4 gal) water cooler bottle. To redesign their bottle, they came to SIPA for one of its special-purpose stretch-blow molding machines, a linear SFL 2/2 (which SIPA now markets at the SFL MAXI 2 – see article elsewhere in this issue). Once again, the bottle is made in 100% rPET.

Ice River called on SIPA to carry out development work to optimize container properties.

This bottle has improved top-load strength and resistance to the vacuum that forms as the bottle empties, thanks to optimized distribution of material throughout the container; this itself is made possible through the special design of the bottle and through optimized process conditions.



Ice River Sustainable Solutions remains a leader in the use of rPET. It even has its own recycling company, Blue Mountain Plastics.

